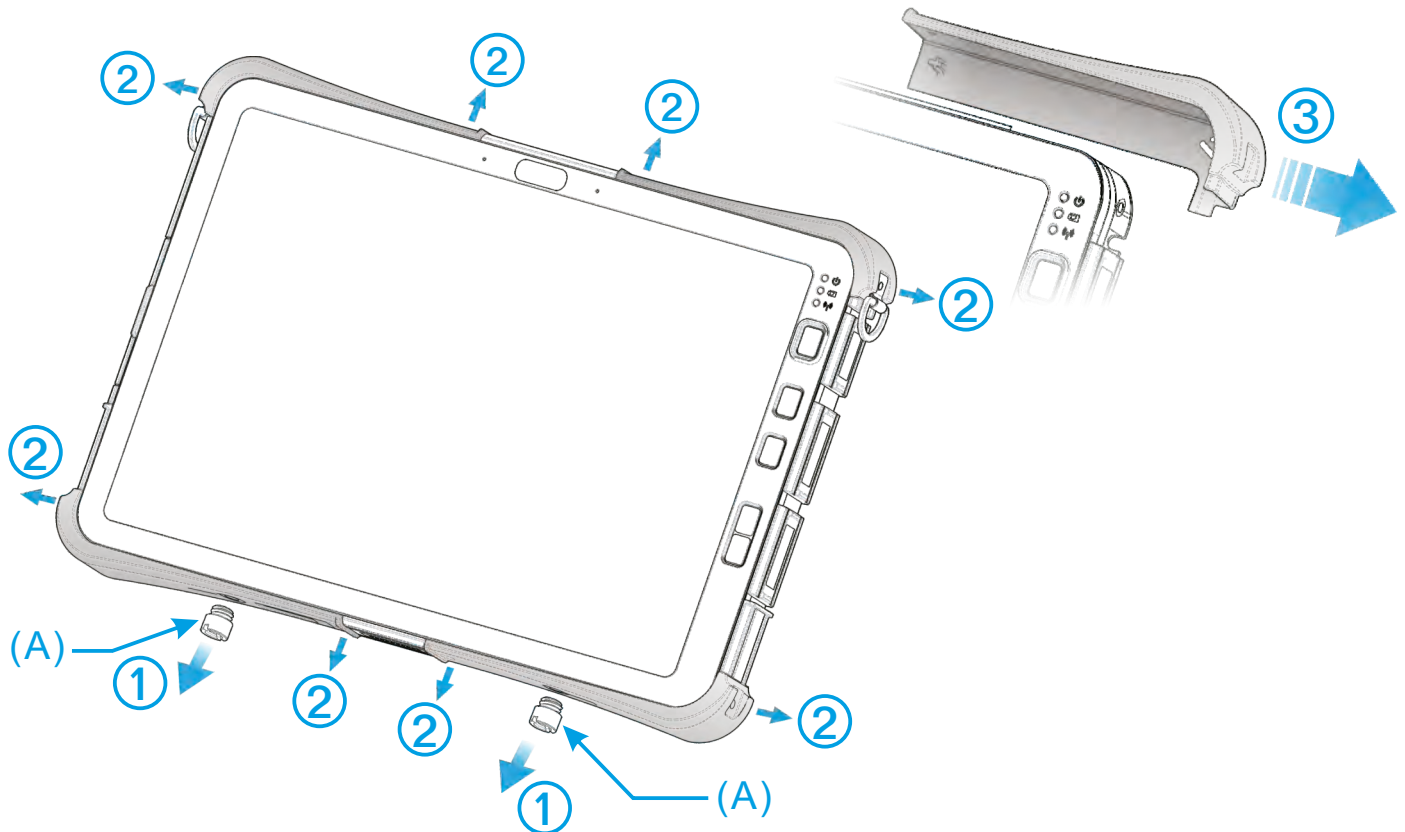


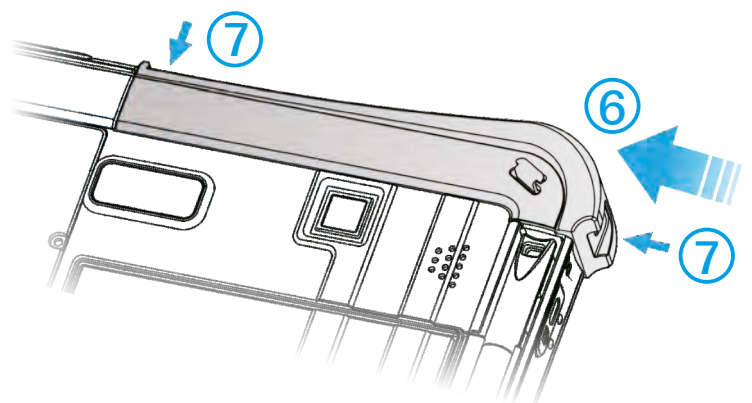
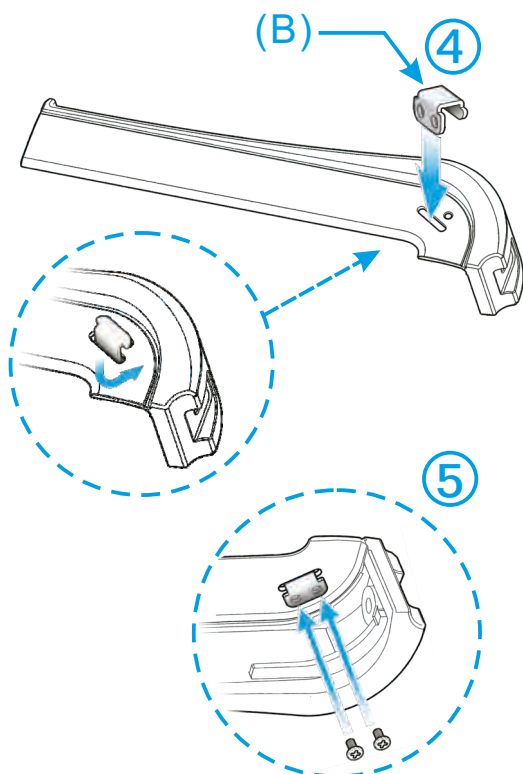
Folio Case Instructions

Pokini TAB K11 series

1. Remove the 2 screw sleeves at the bottom of the machine (A).
2. Remove the screws of the corner protectors; there are 8 screws in total.
3. Remove the 4 corner protectors by moving them outwards.

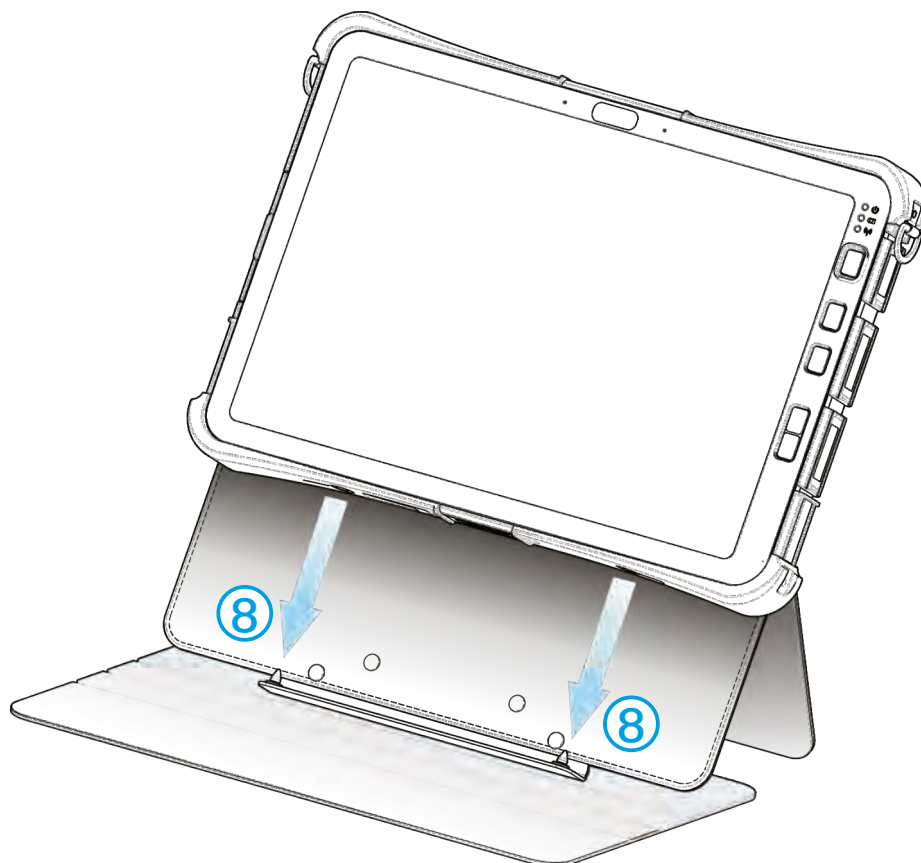


4. Install the Corner Bracket (B).
5. Screw on the 2 small screws to fix the Corner Bracket in place; the Corner Brackets are installed at 4 places.



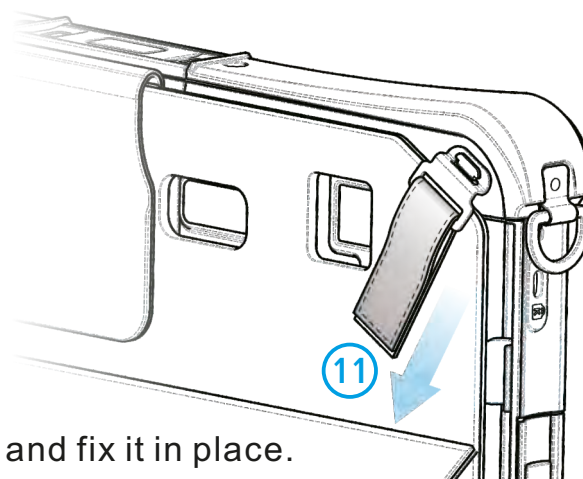
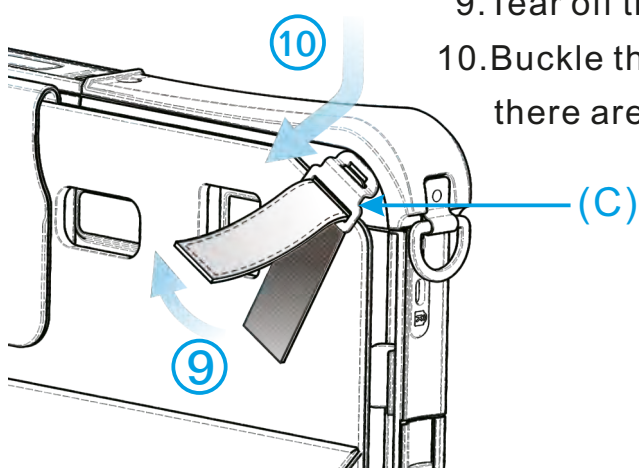
6. Install the 4 corner protectors.
7. Screw on all the corner protector screws and screw sleeves (A).

8. Place the tablet horizontally and align the screw sleeve downwards to the positioning column of the leather case.



9. Tear off the velcro belt behind.

10. Buckle the Slide Buckle (C) to the Corner Bracket, there are two places to buckle.



11. Tighten the velcro belt and fix it in place.