

Pokini

Tab E10W

Quick Start Guide



Caution:

Risk of explosion if battery is replaced by an incorrect type. Dispose of used batteries according to the instructions.



To prevent possible hearing damage, do not listen at high volume levels for long periods.

Attention: Teachers, Parents and Adult Supervisors

This product is an educational tool designed for school children, ages 6 and up. There must be supervision by an adult on school children under 10 when using this tablet. It is a must to have a thorough explanation to students on safe and proper handling of the tablet, power supply, battery pack, and power cord.



Be sure to keep the power cord away from younger children

Please ensure the user understand the following:

- As with all electrical products, precautions should be observed during handling and use to prevent electric shock. The power supply (adapter) should not be handled by the children."
- Emphasize to students that this device is an educational tool and not a toy. The computer, power supply, battery pack or power cord should not be dropped, crushed, stepped on or otherwise abused.
- Ensure students understand the safe and proper handling of power cord and power supply. Misuse could result in serious injury.
- The teacher, parent or adult supervisor should periodically inspect the computer, power supply and power cord for damage and replace it, if necessary.
- Students should report any damage or loose parts to their teacher, parents or adult supervisor, immediately.
- Do not leave the tablet plugged in or "on" when enclosed in a non-vented container, such as a school backpack, as overheating may occur.
- It is recommended that students should take a 5 minute break every 30 minutes of use

Safety Precautions

The following are lists of precautionary measure the students must understand before using this computer inside the classroom or home environment:



1. Do not place near the fire or other sources of heat.
2. Do not expose to magnetic fields.
3. Do not expose to direct sunlight.
4. Do not expose to rain or moisture.
5. Do not place heavy objects to add heavy pressure on the computer.
6. Do not drop the computer.

Package contents

Carefully unpack your box and take out the items listed below. If any of the items are missing or damaged, please contact your dealer immediately:

- One tablet ■ One keyboard docking ■ One USB cable ■ One AC adapter ■ One stylus ■ This guide

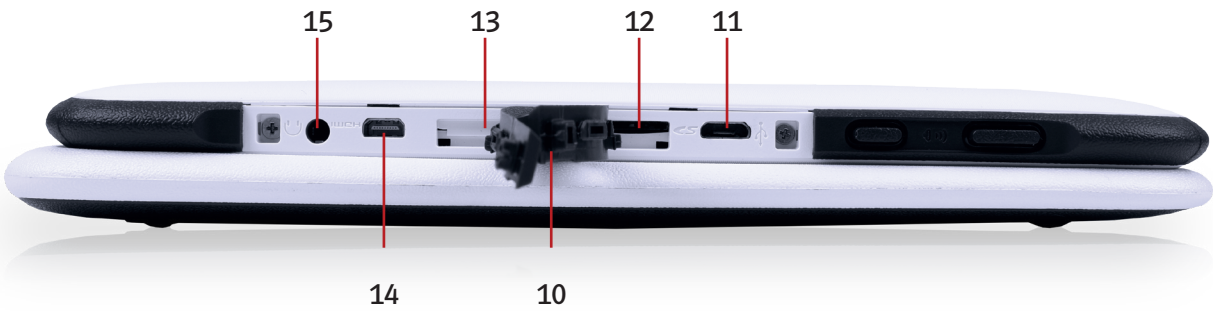
Tablet layout

Front & Left



1	Front facing camera
2	Power lock
3	Microphone
4	Volume up/down
5	Input/output cabinet
6	Touchscreen
7	Stylus holder
8	Stylus
9	Docking connector

Left



10	Rubber cover
11	Micro USB DC IN / Micro USB port
12	Micro SD card slot
13	Micro SIM card slot
14	Micro HDMI port
15	Headphone jack

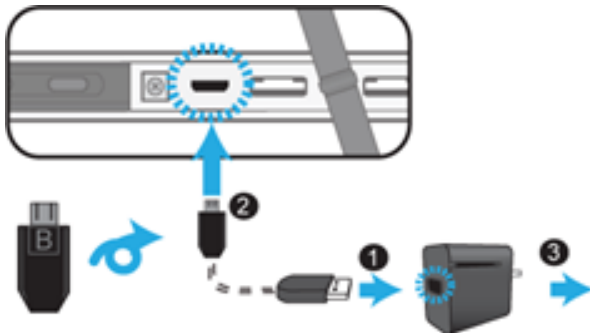
Keyboard



16	Docking connector
17	Windows Key button
18	Touchpad

Charging your tablet

If your tablet is just being unpacked from the box, you need to charge the tablet first. It will take around 4 to 5 hours to be fully charged.

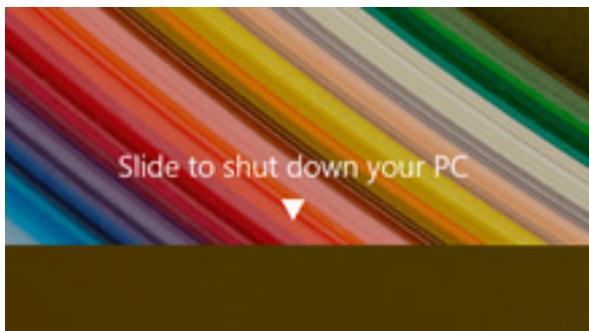


1. Plug the USB head of the cable into the adapter.
2. Plug the micro-USB head of the cable - with the side marked with "B" or an icon facing down - into the micro-USB port on your tablet.
3. Plug the adapter into a wall-socket.

Note: If the remaining power in your battery capacity is 90% or above, plugging the adapter will not fully charge your battery.

Powering ON/OFF your tablet

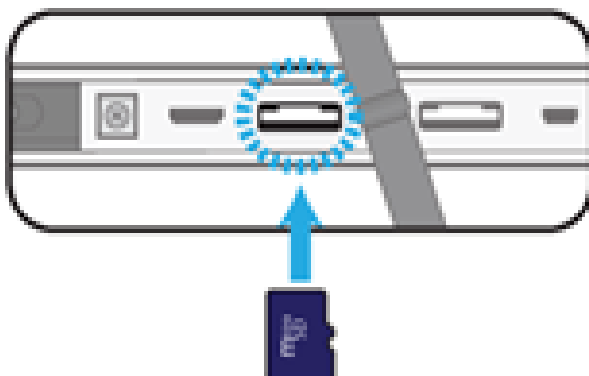
If your tablet is just being unpacked from the box, you need to charge the tablet first. It will take around 4 to 5 hours to be fully charged.



For Windows, follow these steps:

1. Press and hold the power button for at least four seconds, and you will see an instruction appears in the middle of the screen, which is as shown below.
2. Slide your finger on the screen downward, and the system will power off itself.

Inserting a storage card



Your tablet supports micro-SD cards with maximum storage space up to 128GB. You can insert the micro SD card and pull it out without powering down the tablet. To do so, follow the steps below.

Install your Micro SD Card

1. Hold your tablet with front side up.
2. Insert your micro SD card in the direction as shown.

Remove your Micro SD Card

1. Push and release the micro SD card. This will unlock the card.
2. Pull out the micro SD card.

Specifications

Processor	Intel Cherry Trail Z8350 1.44GHz
Memory	2G DDR3L 1600
Storage	64 GB , eMMC v4.51
Wireless	<ul style="list-style-type: none"> ■ Wi-Fi 802.11 a / b / g / n / ac ■ Bluetooth 4.1
WWAN	4G LTE (optional)
Touchscreen	10.1-inch TFT IPS, 5- point touch Resolution: 800 x 1280 (WXGA)
Cameras	<ul style="list-style-type: none"> ■ Front: 2M ■ Rear: 2M
Battery	Li-polymer 6300 mAh
Input/Output	1 x Micro-USB 2.0 OTG port (Type B), 1 x Micro HDMI port, 1 x Analog Mic/head combo jack , 1 x Micro-SD card slot, 1 x Micro SIM card slot
Speaker & Mic	<ul style="list-style-type: none"> ■ Build-in Speaker x 2 ■ Internal digital MIC x 1
AC-Adapter	<ul style="list-style-type: none"> ■ DC Output: 5V/2A/10 Watt ■ Input Voltage: 100 - 240VAC ■ Input Frequency: 47 - 63Hz
Dimension (mm)	<ul style="list-style-type: none"> ■ Tablet + Docking: 282.5 (W) x 193.8 (H) x 23.52 ~21.64>(D) (H = 34.07 with the Macro Lens installed) ■ Tablet only: 275.5 (W) x 180.8 (H) x 12.3 (D) ■ Docking only: 278.9 (W) x 193.8 (H) x 23.15 (D)
Weight	<ul style="list-style-type: none"> ■ Tablet + Docking:1.34 kg ■ Tablet only: 795 g ■ Docking only: 545 g

